



Leasing Info: [470-349-0276](tel:470-349-0276)

[Leasing@Overlook515.com](mailto:Leasing@Overlook515.com)

[www.Overlook515.com](http://www.Overlook515.com)

# Live Above it All. *(Yet Seconds from Everything).*



Overlook 515, Jasper's newest apartment homes, are now available for lease. Now you can reach a new plateau – live your new life above the hustle and bustle of it all on an elevated, tranquil plateau of a brand-new development. Introductory leases start from just over \$1,600 per month (certain restrictions apply). Only 48 apartment homes are available in Phase One, so reserve yours today!

**Now Available for  
Lease. Reserve Your  
New Apartment  
Home Today!**

At up to nearly 1,200 square feet, phase one of Overlook 515 features generous 2 Bedroom / 2 Bath apartment homes that are nearly 10% larger than the national average. Gracious rooms feature luxury plank flooring throughout, kitchens with energy-efficient appliances and granite countertops, and even available laundry machines (for an additional fee).



Pricing is based on the specific apartment and options selected, lease term, and move-in date. Pricing and availability are subject to change. Minimum lease terms and occupancy guidelines may apply. Application deposits may not be refundable and fluctuate based on credit, rental history, income, and/or other qualifying standards. Additional utilities, taxes, and fees may apply. This offer is subject to errors, omissions, and prior withdrawal without notice. Site, floor plans, elevations and dimensions are approximate and subject to change without prior notice and may also depict optional features. All information deemed reliable but not guaranteed. Equal opportunity housing provider.



# OVERLOOK 515

apartment homes

Leasing Info: [470-349-0276](tel:470-349-0276)

[Leasing@Overlook515.com](mailto:Leasing@Overlook515.com)

[www.Overlook515.com](http://www.Overlook515.com)



Pricing is based on the specific apartment and options selected, lease term, and move-in date. Pricing and availability are subject to change. Minimum lease terms and occupancy guidelines may apply. Application deposits may not be refundable and fluctuate based on credit, rental history, income, and/or other qualifying standards. Additional utilities, taxes, and fees may apply. This offer is subject to errors, omissions, and prior withdrawal without notice. Site, floor plans, elevations and dimensions are approximate and subject to change without prior notice and may also depict optional features. All information deemed reliable but not guaranteed. Equal opportunity housing provider.



Leasing Info: [470-349-0276](tel:470-349-0276)

[Leasing@Overlook515.com](mailto:Leasing@Overlook515.com)

[www.Overlook515.com](http://www.Overlook515.com)



# Live Convenient.

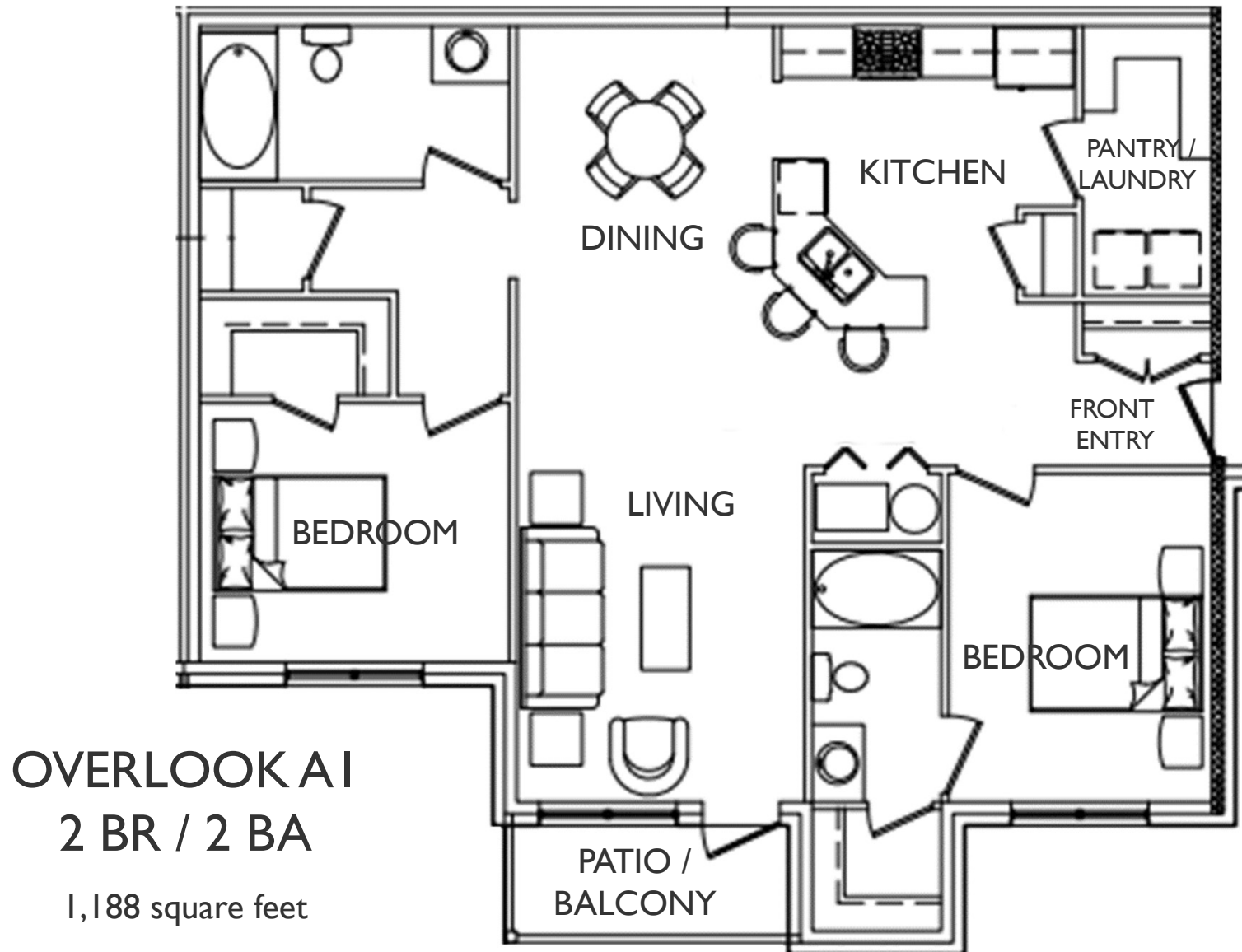
At Overlook 515, location is everything. Perched on a serene plateau, you are just seconds (literally) from all the shopping, dining and recreation options of Highway 515, Highway 53, and Downtown Jasper.

- 2 min. (120 seconds) Walmart, Dollar General, many restaurants
- 3 min. (180 seconds) Ingles, Starbucks, many restaurants
- 4 min. (240 seconds) Downtown Jasper restaurants and more
- 5 min. (300 seconds) Kroger, Home Depot, restaurants
- 6 min. (360 seconds) Chattanooga Technical College and more



Pricing is based on the specific apartment and options selected, lease term, and move-in date. Pricing and availability are subject to change. Minimum lease terms and occupancy guidelines may apply. Application deposits may not be refundable and fluctuate based on credit, rental history, income, and/or other qualifying standards. Additional utilities, taxes, and fees may apply. This offer is subject to errors, omissions, and prior withdrawal without notice. Site, floor plans, elevations and dimensions are approximate and subject to change without prior notice and may also depict optional features. All information deemed reliable but not guaranteed. Equal opportunity housing provider.

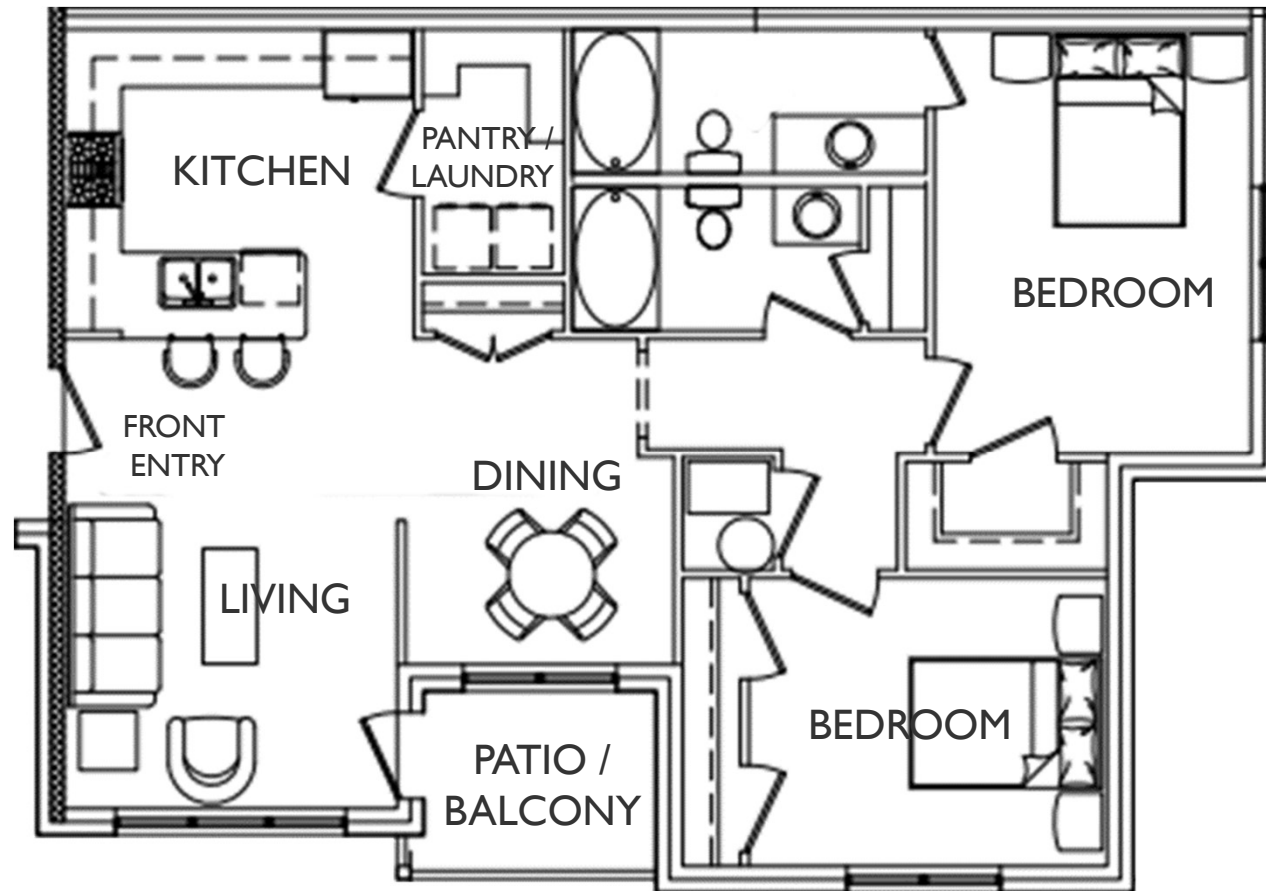




## OVERLOOK BI

2 BR / 2 BA

1,089 square feet





Leasing Info: [470-349-0276](tel:470-349-0276)

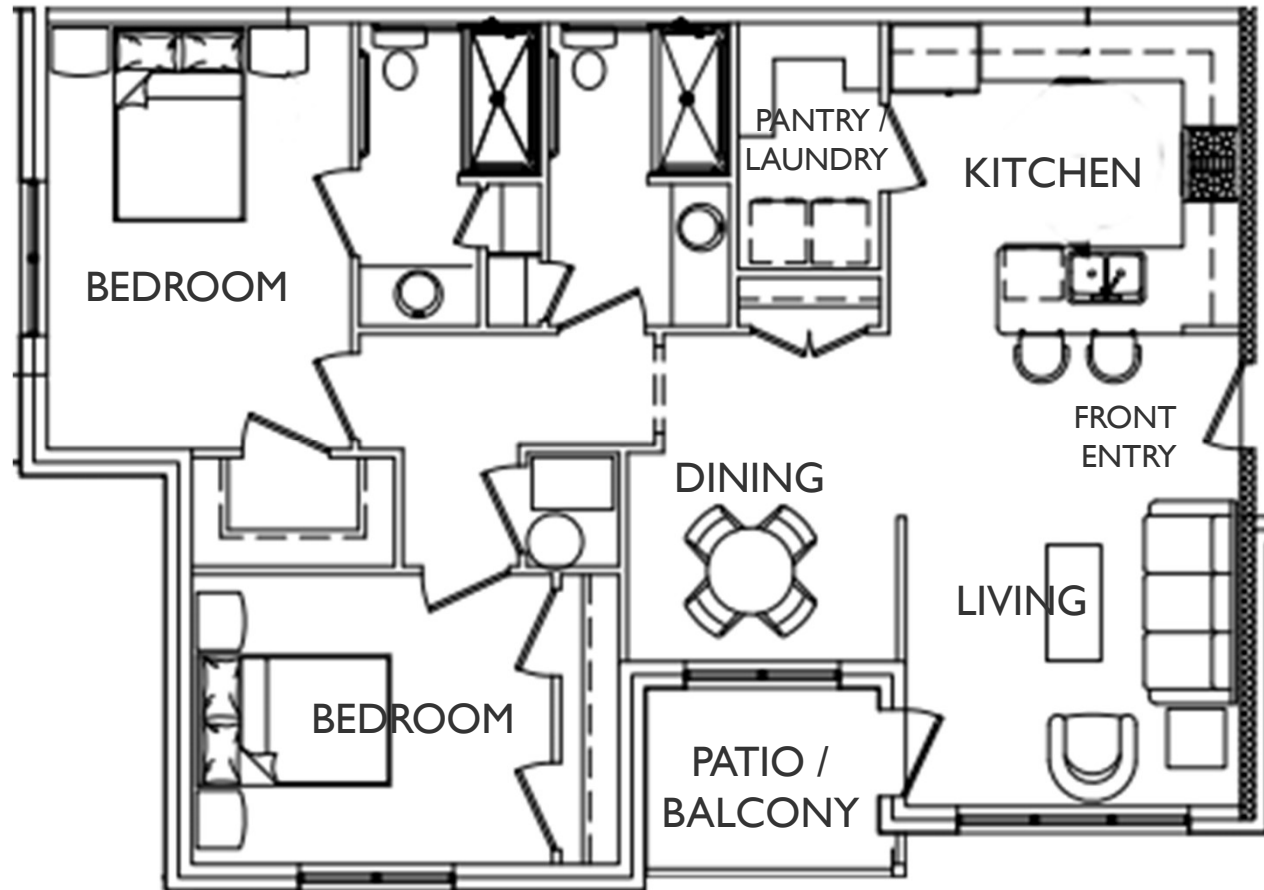
[Leasing@Overlook515.com](mailto:Leasing@Overlook515.com)

[www.Overlook515.com](http://www.Overlook515.com)

## OVERLOOK B2 2 BR / 2 BA

(ADA Home)

1,089 square feet



Pricing is based on the specific apartment and options selected, lease term, and move-in date. Pricing and availability are subject to change. Minimum lease terms and occupancy guidelines may apply. Application deposits may not be refundable and fluctuate based on credit, rental history, income, and/or other qualifying standards. Additional utilities, taxes, and fees may apply. This offer is subject to errors, omissions, and prior withdrawal without notice. Site, floor plans, elevations and dimensions are approximate and subject to change without prior notice and may also depict optional features. All information deemed reliable but not guaranteed. Equal opportunity housing provider.